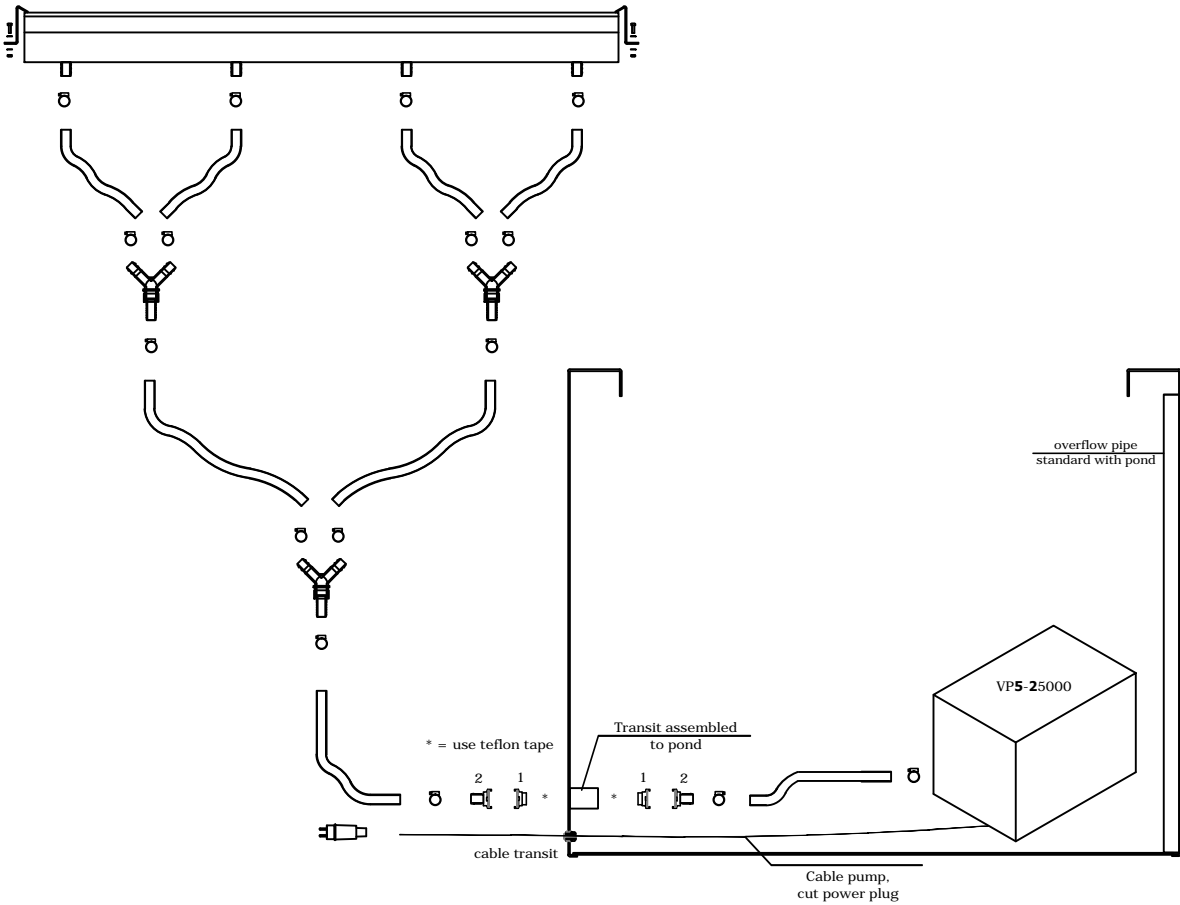
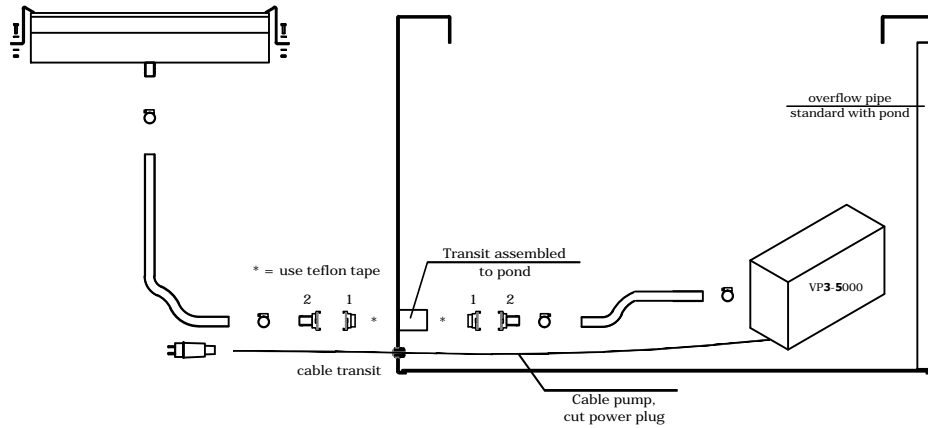


# Waterfall 1500, wall BEHIND pond



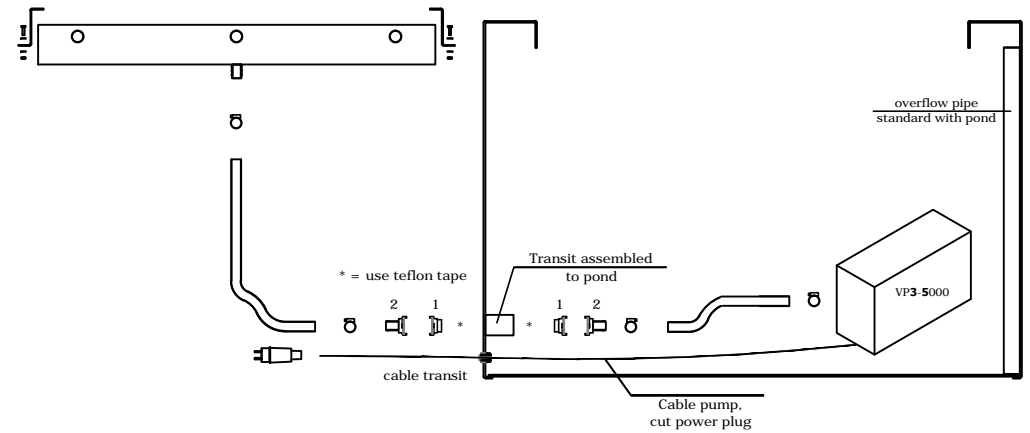
Number	Description	Code
1	Waterfall 1500-50	VB3
1	Waterfall 1500-150	VB4
1	Pump 25000	VP5
2	Hook for fixation (Z-profile)	-
2	Bolt M6-20	-
2	Nut M6	-
4	M6-ring	-
16	Hose clamps	-
3	Y-pieces	-
8	Hose	-
1	Cable transit	-
1	Power plug	-
2	GeKa hose tail 1 (3/4" outer thread)	-
2	GeKa hose tail 2 (with hosetulle)	-
1	Teflon tape	-

## Waterfall 600, wall BEHIND pond



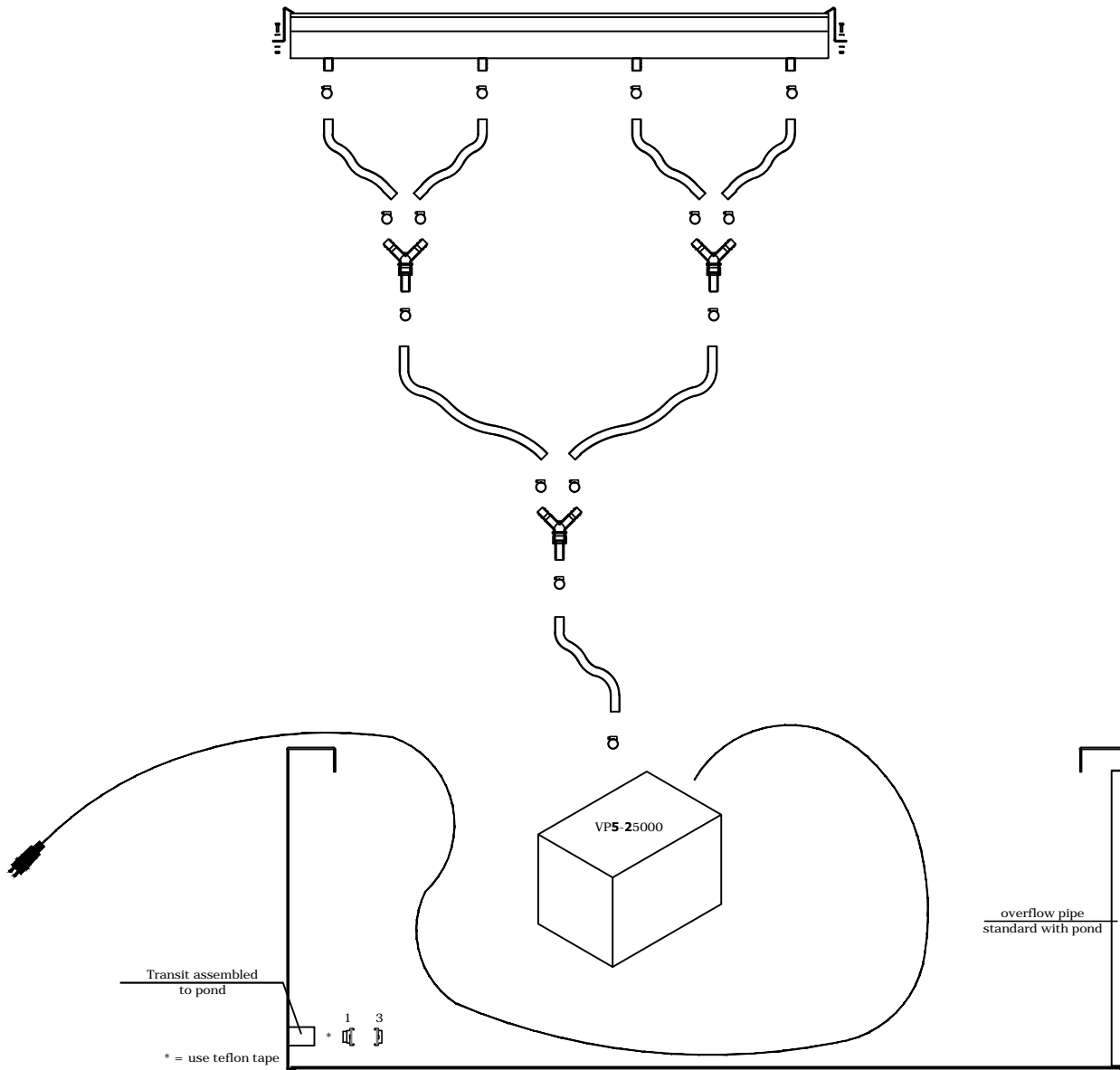
Number	Description	Code
1	Waterfall 600-100	VB1.1
1	Waterfall 600-150	VB2
1	Pump 5000	VP3
2	Hook for fixation (Z-profile)	-
2	Bolt M6-20	-
2	Nut M6	-
4	M6-ring	-
4	Hose clamps	-
2	Hose	-
1	Cable transit	-
1	Power plug	-
2	GeKa hose tail 1 ( $\frac{3}{4}$ " outer thread)	-
2	GeKa hose tail 2 (with hosetulle)	-
1	Teflon tape	-

## 3 tubes waterfall, wall BEHIND pond



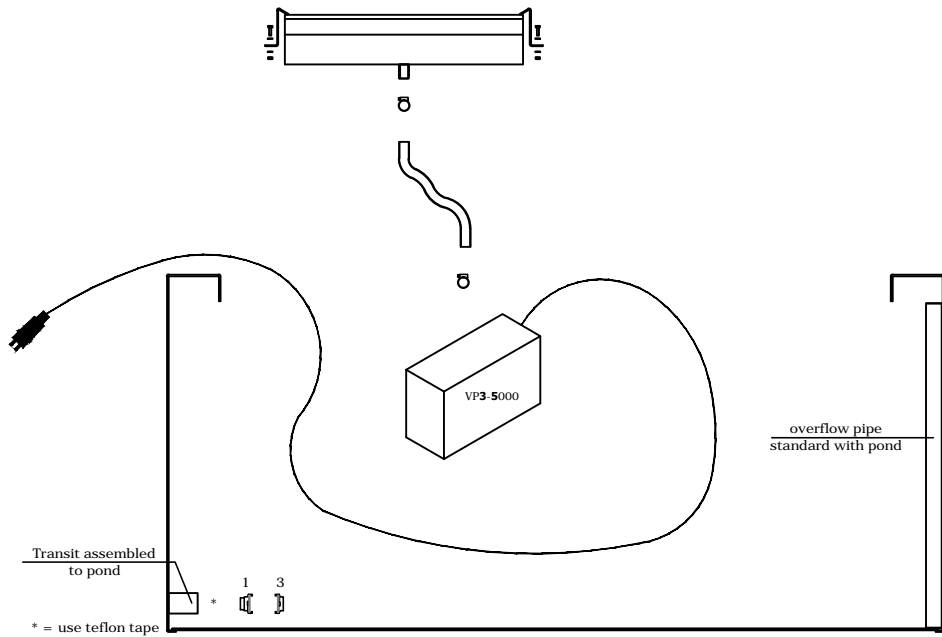
Number	Description	Code
1	Waterfall 3 tubes	VB5.1
1	Pump 5000	VP3
2	Hook for fixation (Z-profile)	-
2	Bolt M6-20	-
2	Nut M6	-
4	M6-ring	-
4	Hose clamps	-
2	Hose	-
1	Cable transit	-
1	Power plug	-
2	GeKa hose tail 1 ( $\frac{3}{4}$ " outer thread)	-
2	GeKa hose tail 2 (with hosetulle)	-
1	Teflon tape	-

# Waterfall 1500, wall ON pond



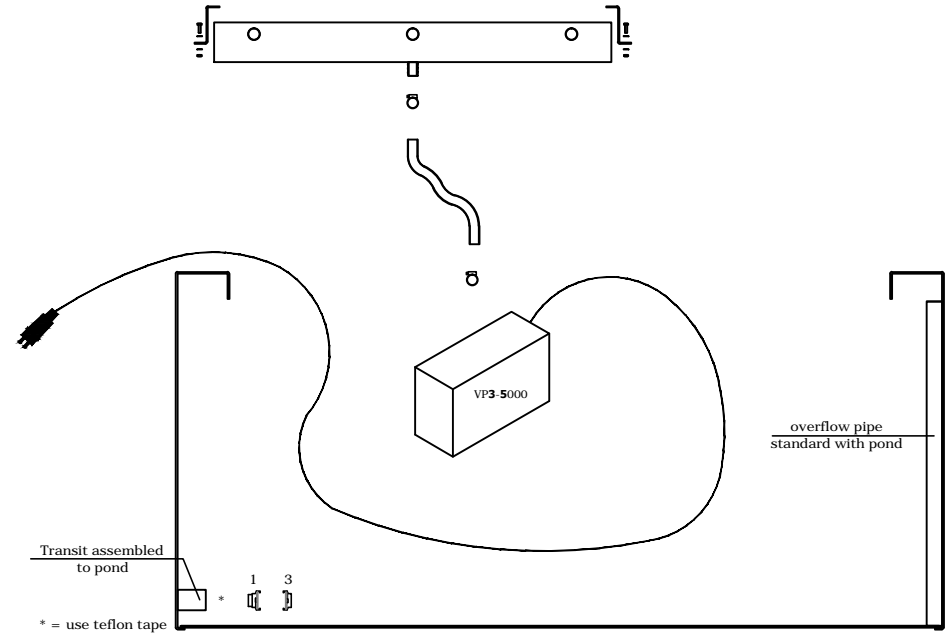
Number	Description	Code
1	Waterfall 1500-50	VB3
1	Waterfall 1500-150	VB4
1	Pump 25000	VP5
2	Hook for fixation (Z-profile)	-
2	Bolt M6-20	-
2	Nut M6	-
4	M6-ring	-
14	Hose clamps	-
3	Y-pieces	-
7	Hose	-

## Waterfall 600, wall ON pond



Number	Description	Code
1	Waterfall 600-100	VB1.1
1	Waterfall 600-150	VB2
1	Pump 5000	VP3
2	Hook for fixation (Z-profile)	-
2	Bolt M6-20	-
2	Nut M6	-
4	M6-ring	-
2	Hose clamps	-
1	Hose	-

## 3 tubes waterfall, wall ON pond



Number	Description	Code
1	Waterfall 3 tubes	VB5.1
1	Pump 5000	VP3
2	Hook for fixation (Z-profile)	-
2	Bolt M6-20	-
2	Nut M6	-
4	M6-ring	-
2	Hose clamps	-
1	Hose	-